



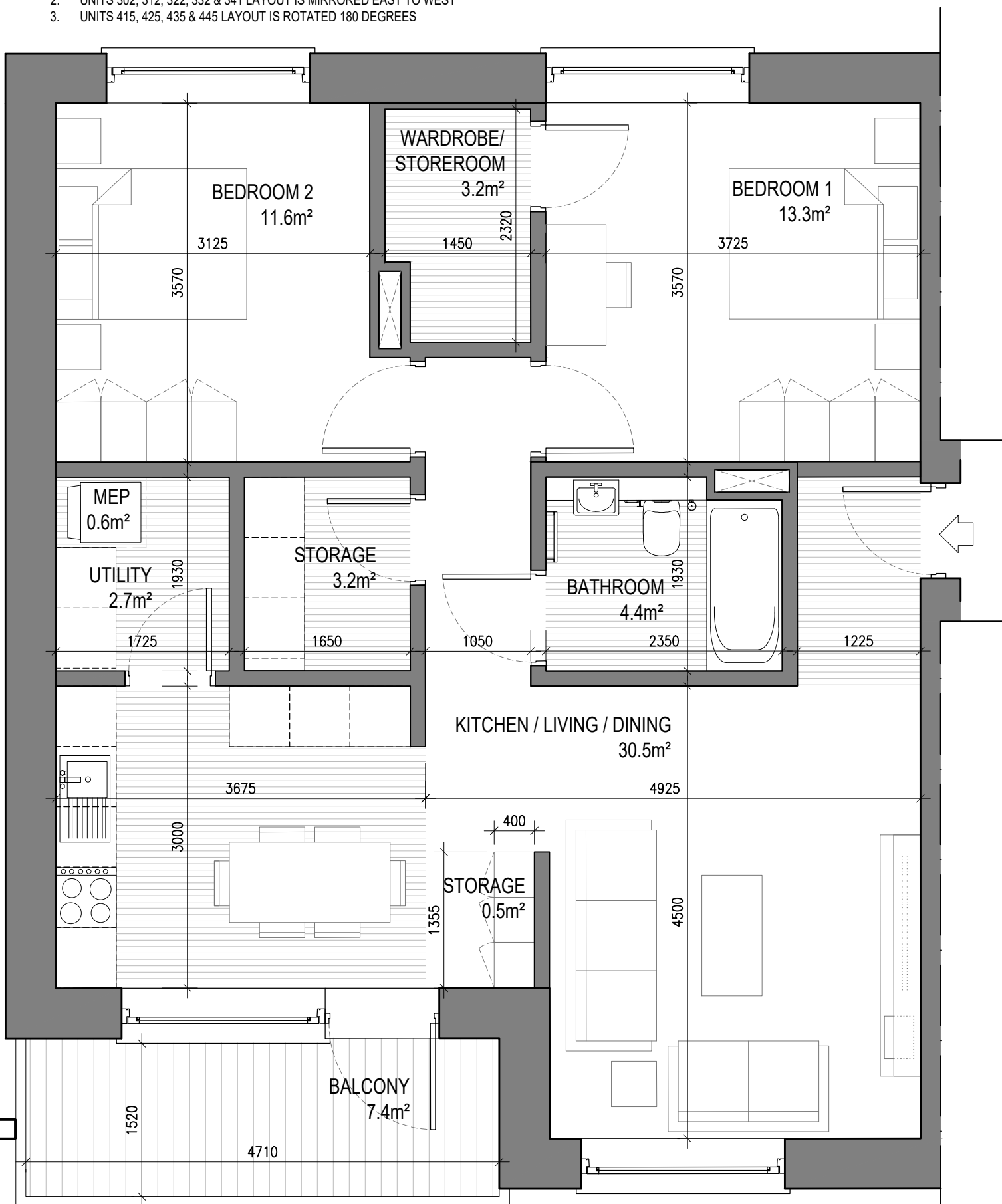
UNIT TYPE B2.1

2 Beds Unit - Floor Area: 83.68m²

SCALE 1:50

NOTE: 1. UNITS 505, 515, 525, 535 & 545 LAYOUT IS MIRRORED NORTH TO SOUTH
2. UNITS 302, 312, 322, 332 & 341 LAYOUT IS MIRRORED EAST TO WEST
3. UNITS 415, 425, 435 & 445 LAYOUT IS ROTATED 180 DEGREES

	REQUIRED (m ²)	PROVIDED (m ²)
STORAGE SPACE	6.0	6.5
PRIVATE AMENITY SPACE	7.0	7.5
AGGREGATE BEDROOM AREA	24.4	25.9
AGGREGATE KITCHEN / LIVING / DINING	30.0	34.5



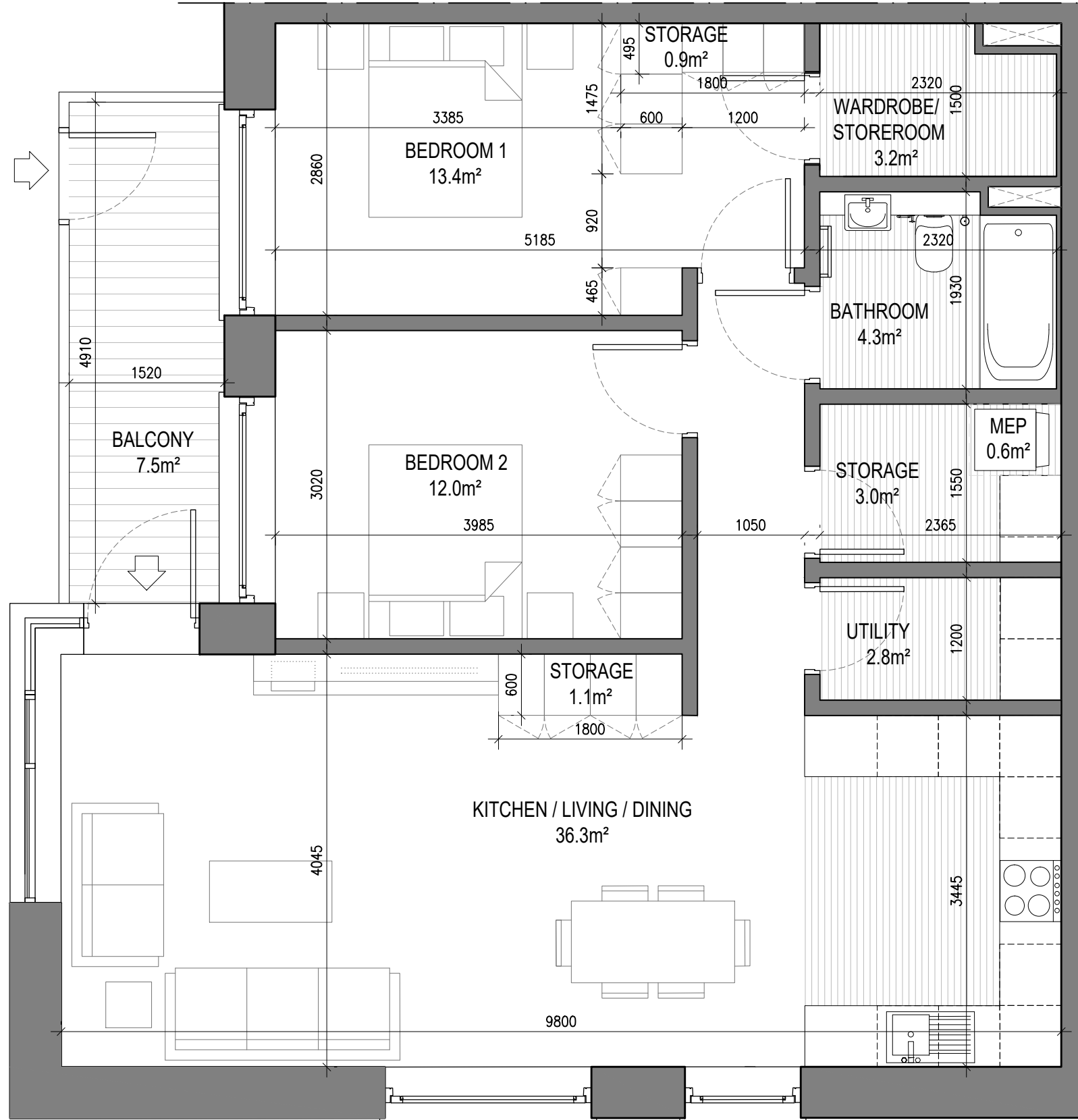
UNIT TYPE B2.2

2 Beds Unit - Floor Area: 81.22m²

SCALE 1:50

NOTE: UNITS 111, 121, 131, 141 & 151 LAYOUT IS MIRRORED EAST TO WEST

	REQUIRED (m ²)	PROVIDED (m ²)
STORAGE SPACE	6.0	6.4
PRIVATE AMENITY SPACE	7.0	7.4
AGGREGATE BEDROOM AREA	24.4	24.9
AGGREGATE KITCHEN / LIVING / DINING	30.0	30.5



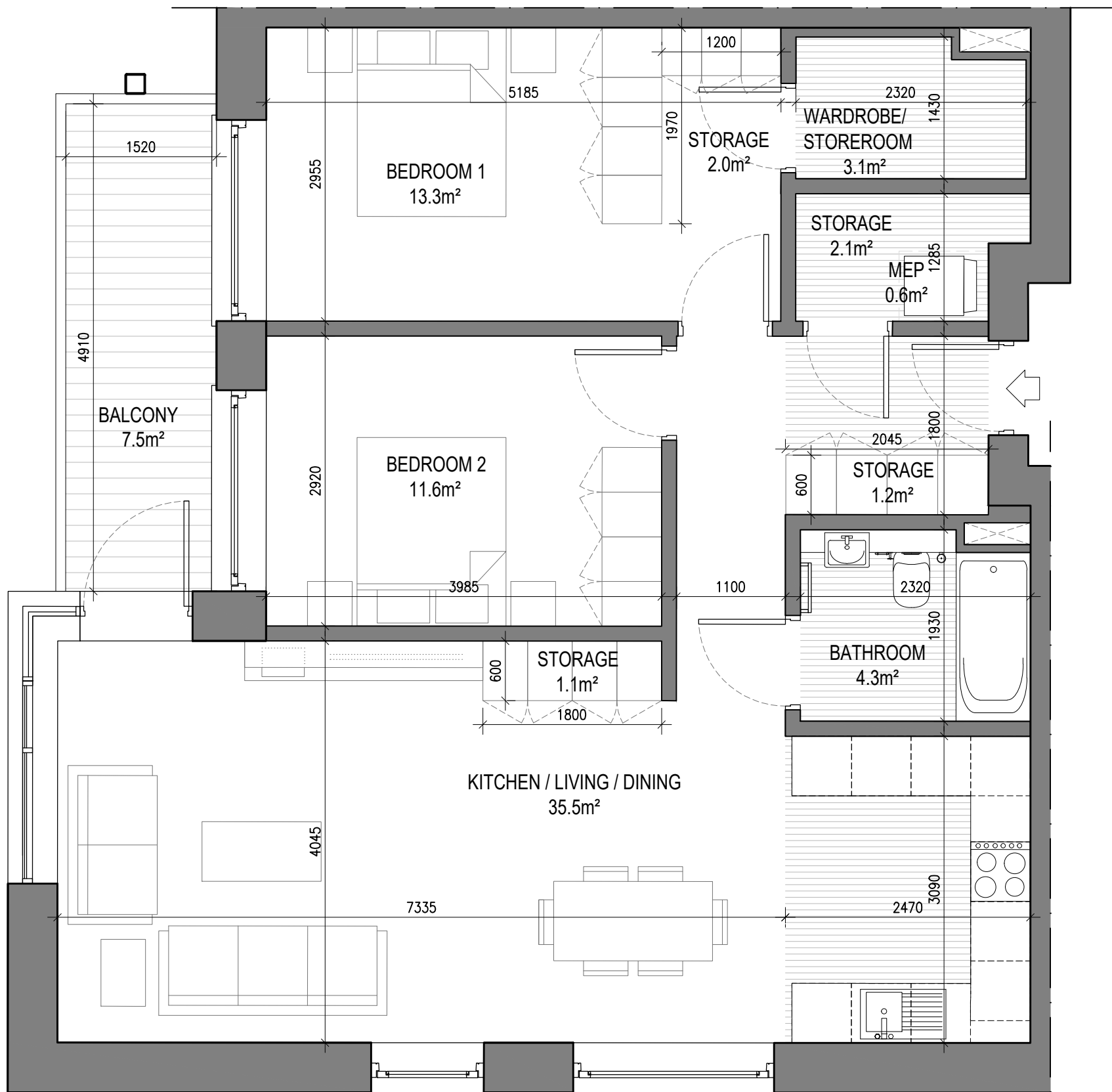
UNIT TYPE B2.4

2 Beds Unit - Floor Area: 87.19m²

SCALE 1:50

NOTE: UNIT 304 LAYOUT IS MIRRORED EAST TO WEST

	REQUIRED (m ²)	PROVIDED (m ²)
STORAGE SPACE	6.0	7.8
PRIVATE AMENITY SPACE	7.0	7.5
AGGREGATE BEDROOM AREA	24.4	25.4
AGGREGATE KITCHEN / LIVING / DINING	30.0	36.3



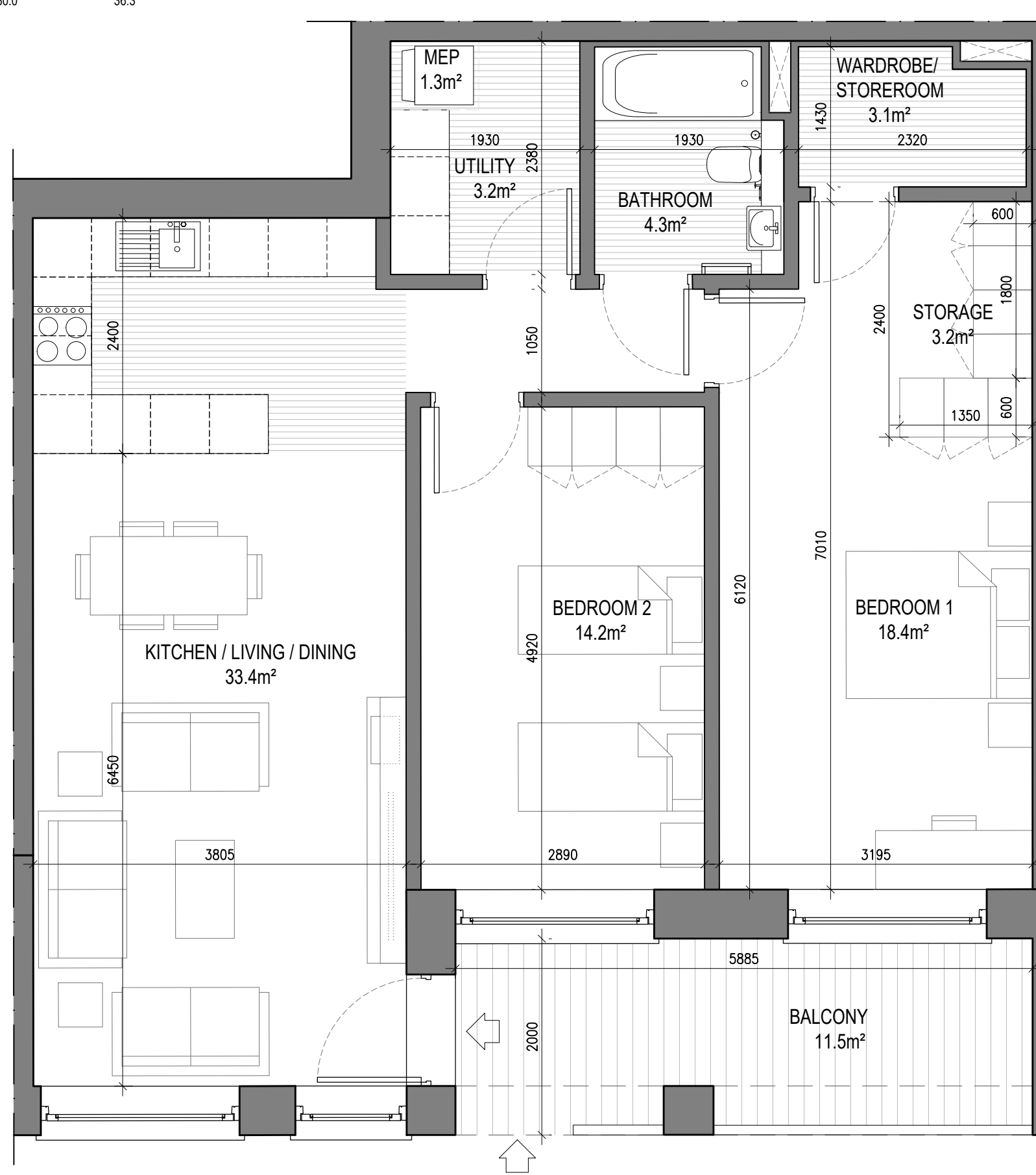
UNIT TYPE B2.3

2 Beds Unit - Floor Area: 86.10m²

SCALE 1:50

NOTE: UNITS 314, 324, 334, 343 & 353 LAYOUT IS MIRRORED EAST TO WEST

	REQUIRED (m ²)	PROVIDED (m ²)
STORAGE SPACE	6.0	6.4
PRIVATE AMENITY SPACE	7.0	7.5
AGGREGATE BEDROOM AREA	24.4	24.9
AGGREGATE KITCHEN / LIVING / DINING	30.0	35.5



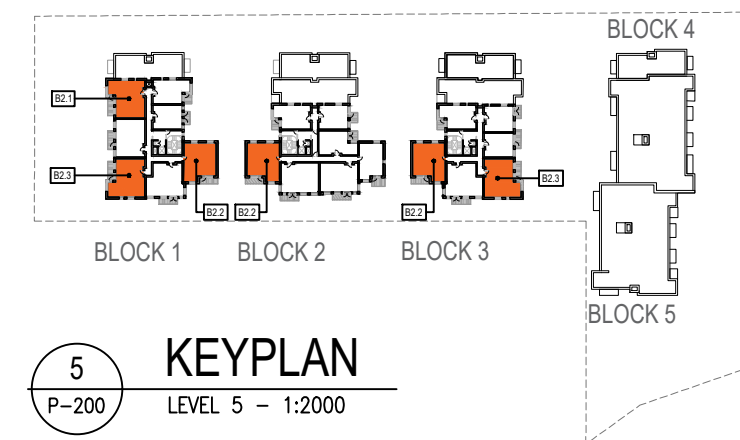
UNIT TYPE B2.5

2 Beds Unit - Floor Area: 89.17m²

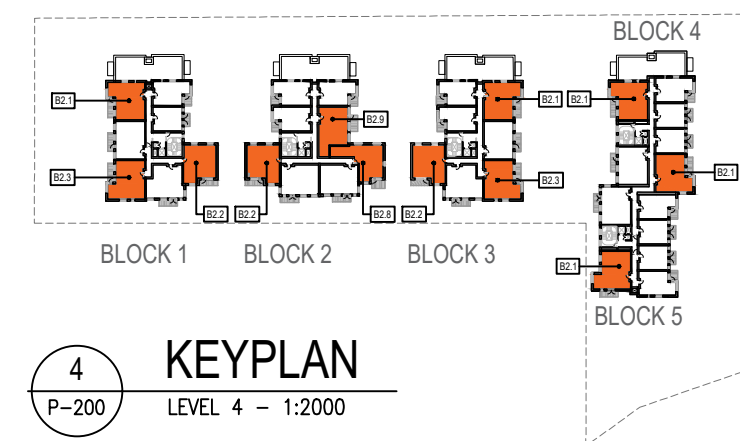
SCALE 1:50

NOTE: UNITS 111, 121, 131, 141 & 151 LAYOUT IS MIRRORED EAST TO WEST

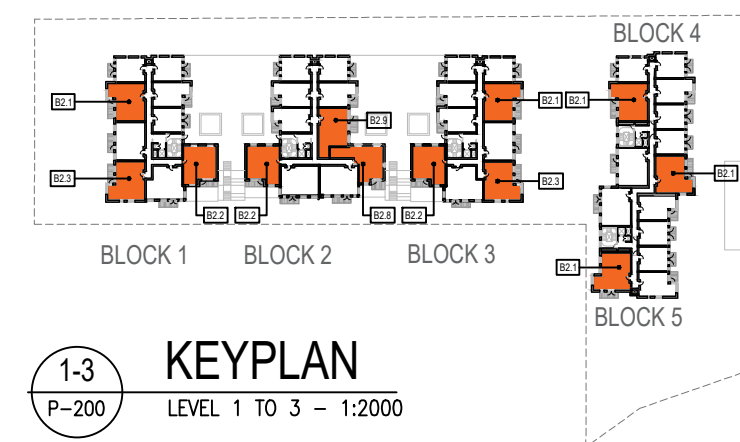
	REQUIRED (m ²)	PROVIDED (m ²)
STORAGE SPACE	6.0	6.4
PRIVATE AMENITY SPACE	7.0	11.5
AGGREGATE BEDROOM AREA	24.4	25.4
AGGREGATE KITCHEN / LIVING / DINING	30.0	38.3



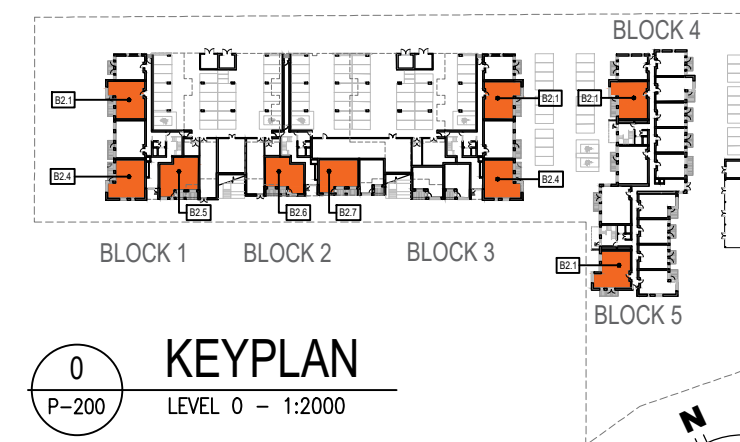
5
P-200
KEYPLAN
LEVEL 5 - 1:2000



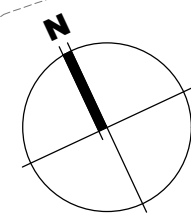
4
P-200
KEYPLAN
LEVEL 4 - 1:2000



1-3
P-200
KEYPLAN
LEVEL 1 TO 3 - 1:2000



0
P-200
KEYPLAN
LEVEL 0 - 1:2000



Notes
1. Copyright Reserved
2. Work to signed dimensions only. Do not scale drawing
3. The contractor is responsible for checking all levels and dimensions on site and shall refer all discrepancies to the Architect
4. Where appropriate, for details of r.c. structure, or mechanical and electrical details, see Engineers drawings
5. Proprietary items shall be fixed in strict accordance with manufacturers instructions.
6. Sizes of proprietary items shall be checked with manufacturer.
7. The contractor shall be responsible for the coordination of structure, finishes and services.

Issue Status
Progress
Planning Application
Fire Cert
Disability Cert
Tender
Construction
As Built
Information Only

M:\Project Section - Current\6269 Carlisle Site Terenure\CAD\Planning\01_SHD Planning Files\221102_Proposed Drawings Set\DWG\6269-P-200 - Proposed Unit Types - Internal Layouts\6269-P-200 Proposed Unit Types_Internal Layouts_no Enroute.dwg 02/11/2022 15:00:00

No.	Date	Revision	Initials
01	02/11/22	Issued for LRD Planning	BKD

Project	Carlisle Site, Kimmage Residential Development
Drawing Title	Proposed Unit Types - Internal Layouts - Sheet 3 of 4
Drawing No	6269 LRD-P-203
Scale	1:50@A1
Rev	01
Drawn	BKD
Date	26/08/21

6-7 HARCOURT TERRACE, DUBLIN 2, IRELAND
t +353-1-618 2400 f +353-1-676 7395
www.bkd.ie
bkdarchitects
BURKE-KENNEDY DOYLE