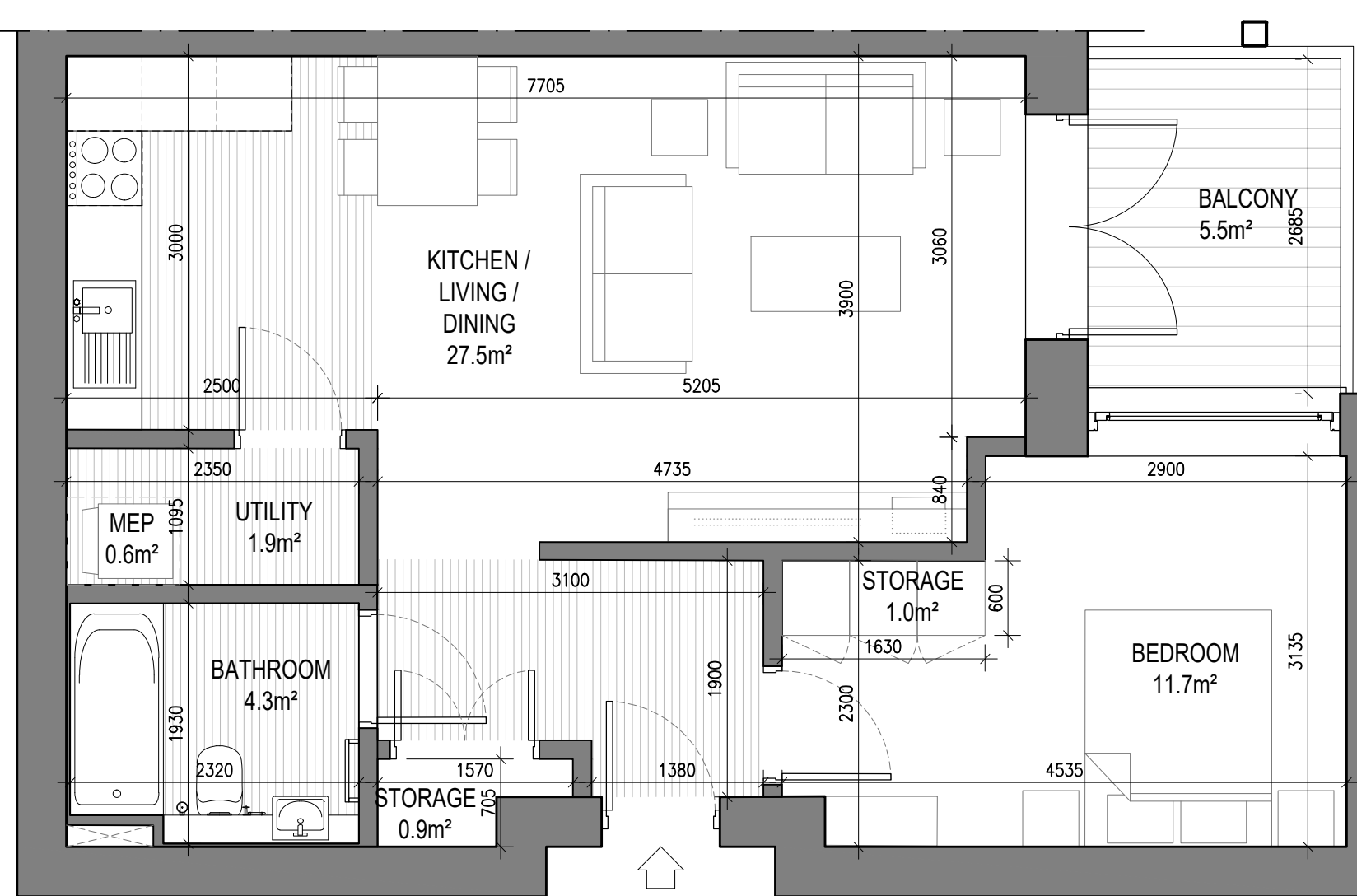


UNIT TYPE A2.3

1 Bed Unit - Floor Area: 56.09m²

SCALE 1:50

| | REQUIRED (m²) | PROVIDED (m²) |
|-------------------------------------|---------------|---------------|
| STORAGE SPACE | 3.0 | 3.8 |
| PRIVATE AMENITY SPACE | 5.0 | 7.6 |
| AGGREGATE BEDROOM AREA | 11.4 | 12.8 |
| AGGREGATE KITCHEN / LIVING / DINING | 23.0 | 32.3 |

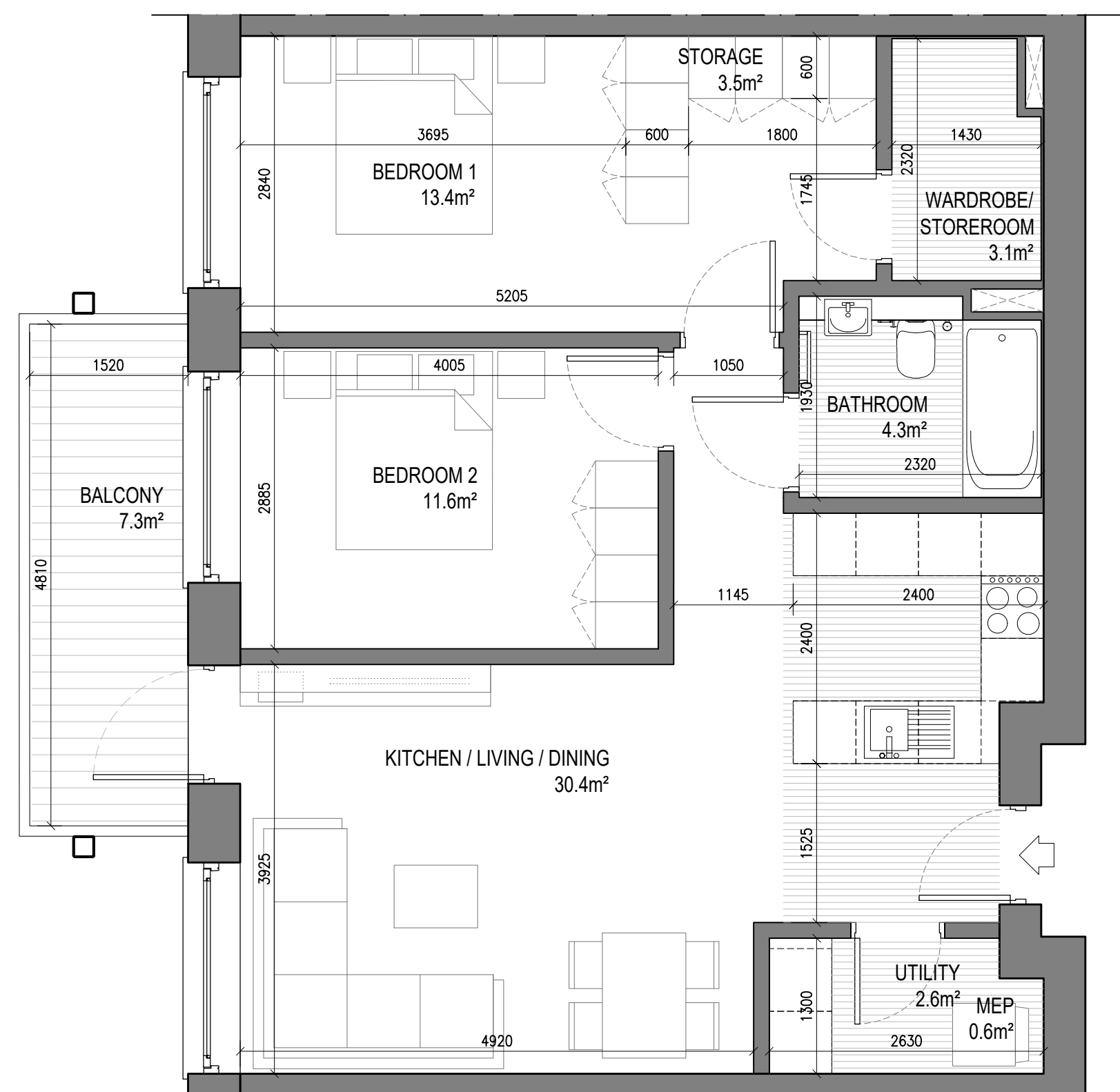


UNIT TYPE A2.6

1 Bed Unit - Floor Area: 55.96m²

SCALE 1:50

| | REQUIRED (m²) | PROVIDED (m²) |
|-------------------------------------|---------------|---------------|
| STORAGE SPACE | 3.0 | 3.8 |
| PRIVATE AMENITY SPACE | 5.0 | 5.5 |
| AGGREGATE BEDROOM AREA | 11.4 | 11.7 |
| AGGREGATE KITCHEN / LIVING / DINING | 23.0 | 27.5 |



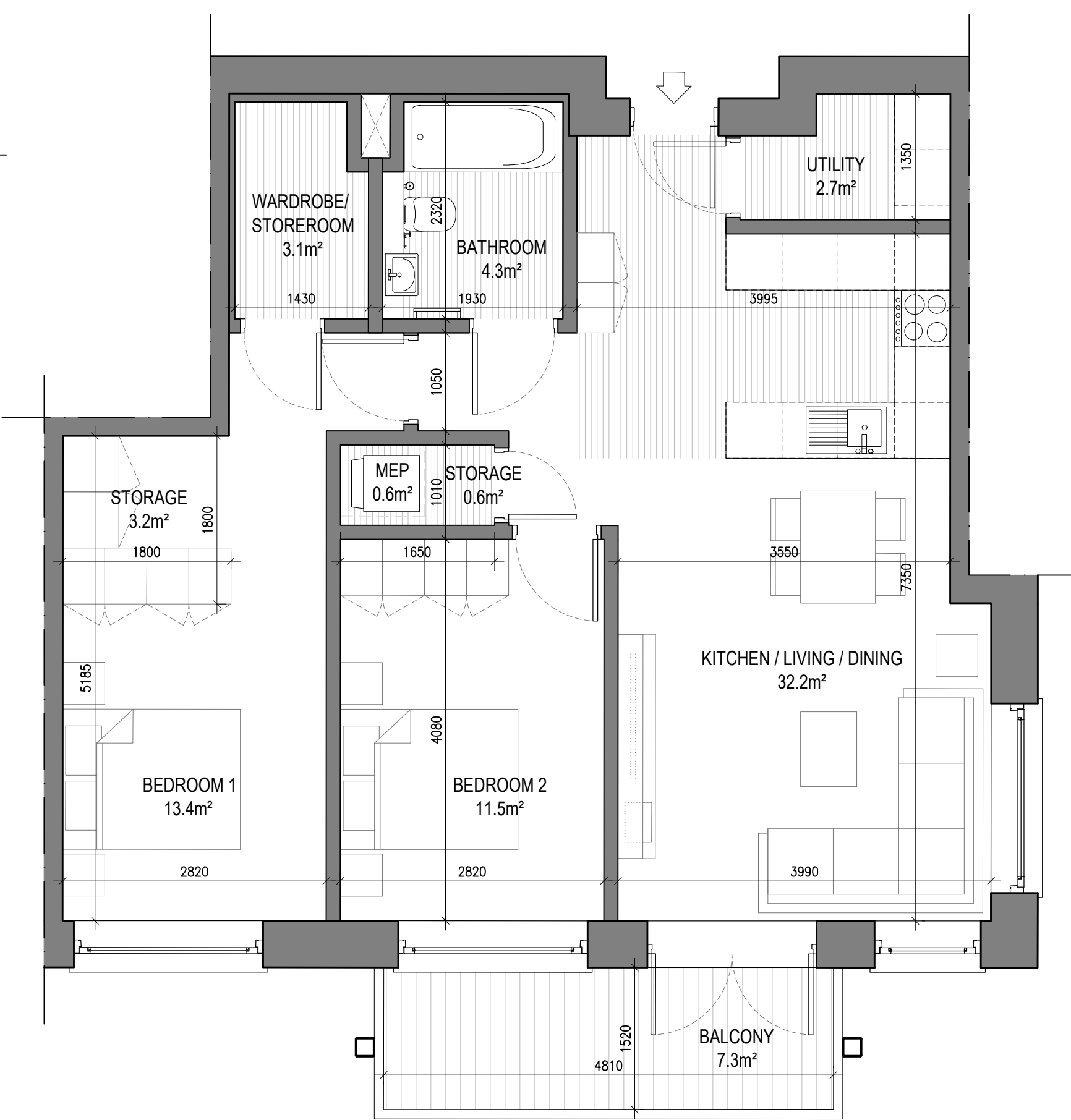
UNIT TYPE B1.1

2 Beds Unit - Floor Area: 75.49m²

SCALE 1:50

| | REQUIRED (m²) | PROVIDED (m²) |
|-------------------------------------|---------------|---------------|
| STORAGE SPACE | 6.0 | 6.1 |
| PRIVATE AMENITY SPACE | 7.0 | 7.3 |
| AGGREGATE BEDROOM AREA | 24.4 | 25.0 |
| AGGREGATE KITCHEN / LIVING / DINING | 30.0 | 30.4 |

NOTE: 1. UNITS 406, 506, 416, 516, 426, 526, 436, 536, 446 & 546 LAYOUT IS MIRRORED NORTH TO SOUTH
2. UNITS 303, 313, 323, 333 & 342 LAYOUT IS MIRRORED EAST TO WEST



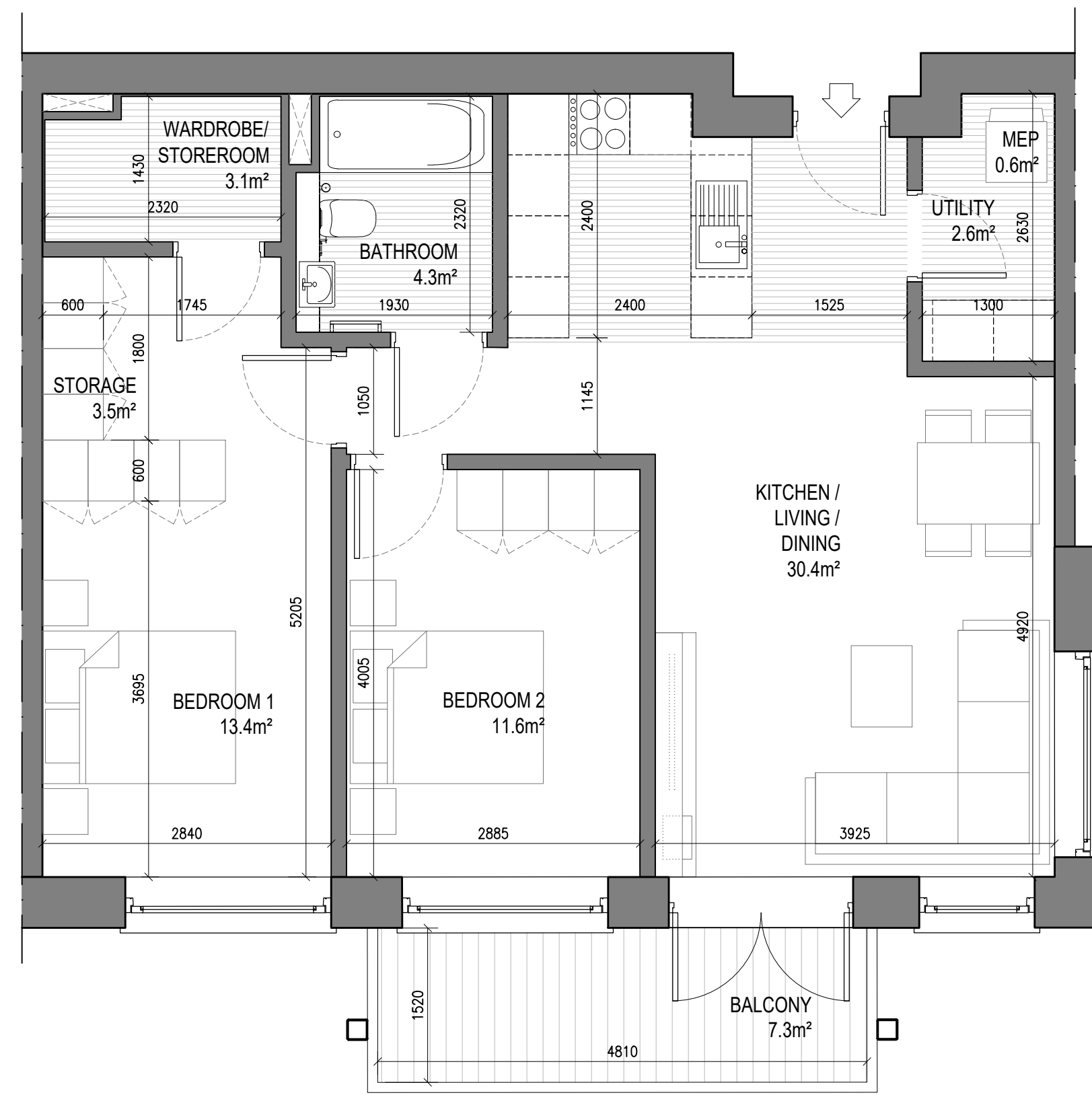
UNIT TYPE B1.2

2 Beds Unit - Floor Area: 77.79m²

SCALE 1:50

| | REQUIRED (m²) | PROVIDED (m²) |
|-------------------------------------|---------------|---------------|
| STORAGE SPACE | 6.0 | 6.5 |
| PRIVATE AMENITY SPACE | 7.0 | 7.5 |
| AGGREGATE BEDROOM AREA | 24.4 | 24.9 |
| AGGREGATE KITCHEN / LIVING / DINING | 30.0 | 32.2 |

NOTE: UNITS 315, 325, 335, 344 & 354 LAYOUT IS MIRRORED EAST TO WEST



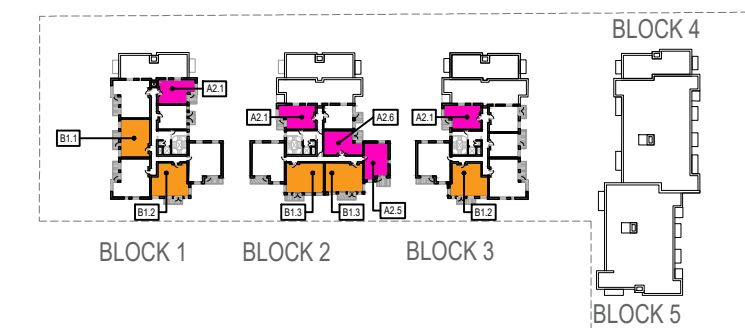
UNIT TYPE B1.3

2 Beds Unit - Floor Area: 75.49m²

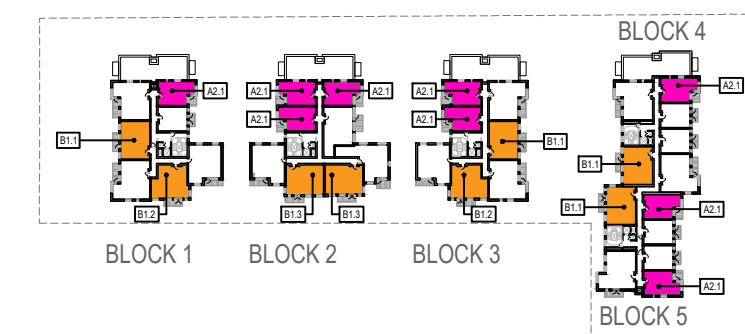
SCALE 1:50

| | REQUIRED (m²) | PROVIDED (m²) |
|-------------------------------------|---------------|---------------|
| STORAGE SPACE | 6.0 | 6.1 |
| PRIVATE AMENITY SPACE | 7.0 | 7.3 |
| AGGREGATE BEDROOM AREA | 24.4 | 25.0 |
| AGGREGATE KITCHEN / LIVING / DINING | 30.0 | 30.4 |

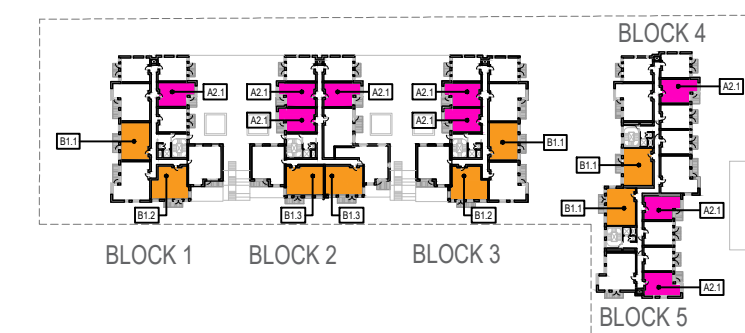
NOTE: UNITS 213, 223, 233, 243 & 253 LAYOUT IS MIRRORED EAST TO WEST



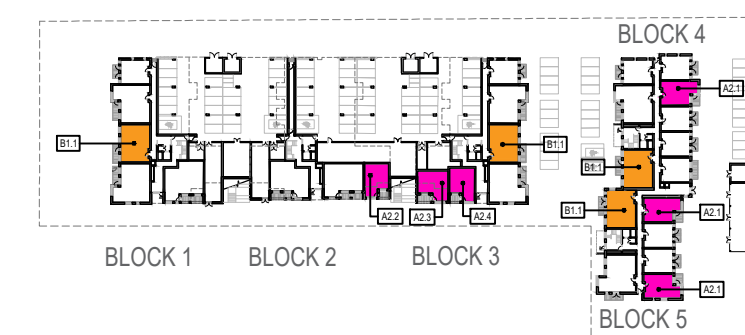
5 KEYPLAN
LEVEL 5 - 1:2000



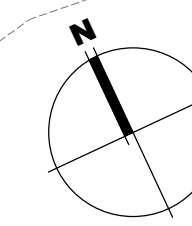
4 KEYPLAN
LEVEL 4 - 1:2000



1-3 KEYPLAN
LEVEL 1 TO 3 - 1:2000



0 KEYPLAN
LEVEL 0 - 1:2000



Notes
1. Copyright Reserved
2. Work to figured dimensions only. Do not scale drawing
3. The contractor is responsible for checking all levels and dimensions on site and shall refer all discrepancies to the Architect
4. Where appropriate, for details of r.c. structure, or mechanical and electrical details, see Engineers drawings
5. Proprietary items shall be fixed in strict accordance with manufacturers instructions.
6. Sizes of proprietary items shall be checked with manufacturer.
7. The contractor shall be responsible for the coordination of structure, finishes and services.

Issue Status
Progress
Planning Application
Fire Cert
Disability Cert
Tender
Construction
As Built
Information Only

M:\Project Section - Current\6269 Carlisle Site Terenure\CAD\Planning\01_SHD Planning Files\221102_Proposed Drawings Set\DWG\6269-P-200 - Proposed Unit Types - Internal Layouts\6269-P-200 Proposed Unit Types_Internal Layouts_no Enroute.dwg 02/11/2022 14:54:51

| No. | Date | Revision | Initials |
|-----|----------|-------------------------|----------|
| 01 | 02/11/22 | Issued for LRD Planning | BKD |
| | | | |
| | | | |
| | | | |
| | | | |

| | |
|---------------|---|
| Project | Carlisle Site, Kimmage Residential Development |
| Drawing Title | Proposed Unit Types - Internal Layouts - Sheet 2 of 4 |
| Drawing No | 6269 LRD-P-202 |
| Scale | 1:50@A1 |
| Rev | 01 |
| Drawn | BKD |
| Date | 26/08/21 |

6-7 HARCOURT TERRACE, DUBLIN 2, IRELAND
t +353-1-618 2400 f +353-1-676 7396
www.bkd.ie
bkdarchitects
BURKE-KENNEDY DOYLE